

Raccoon Twp. BEAVER

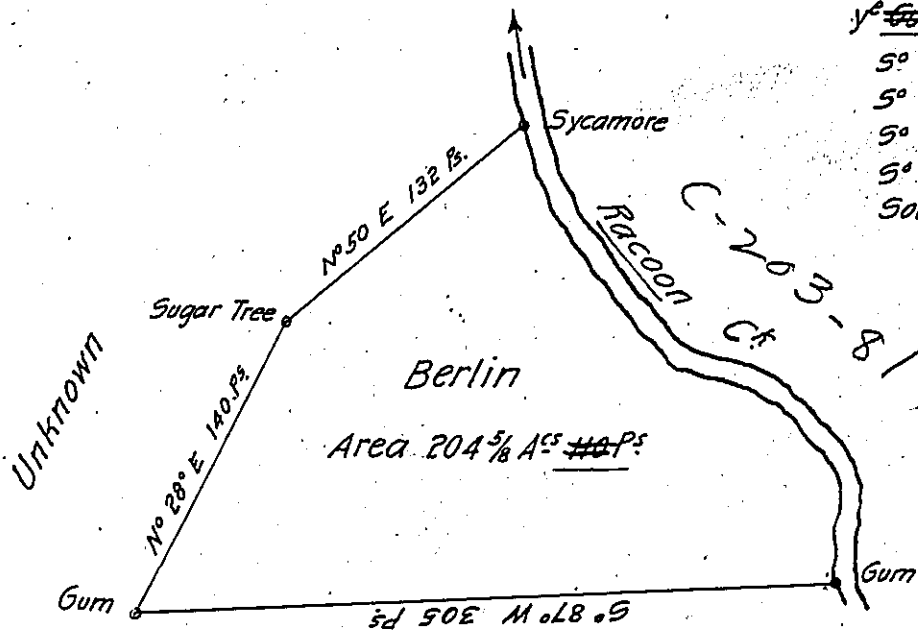
282

P 8-95

3-159

Courses up y^e Creek from
y^e ~~Gum~~ Sycamore

- S^o 20^o E 40 Ps.
 - S^o 37^o E 70 do.
 - S^o 67^o E 64 do.
 - S^o 36^o E 39 do
 - South 43 do. to y^e Gum.
- 256



C-215-184

UNKNOWN

A Draught of a Survey call'd Berlin, lying on Raccoon Ck. in Washington County. Cont^d. 204 Ac^s & 110 Ps with y^e usual allow^{ce} executed Sept^r 3^d 1785 in Pursuance of a Warr^t in y^e name of Jn^o. Burlin dated Feb^r 3^d 1785 for 200 Ac^s

W^t No 53

Jn^o Lukens Esq^r

Suro^r Gen^l

Presley Nevill

Mat^w Ritchie

} D. Su^r

IN TESTIMONY that the above is a copy of the original remaining on file in the Department of Internal Affairs of Pennsylvania, made conformably to an Act of Assembly approved the 16th day of February, 1833, I have hereunto set my Hand and caused the Seal of said Department to be affixed at Harrisburg, this twenty third day of November 1903.

George B. Brown
Secretary of Internal Affairs.